

PVC

In-House

Water Piping System



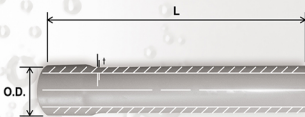
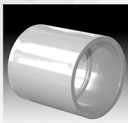
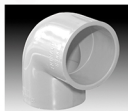
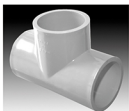
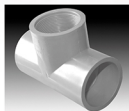
EMERALD

PVC Pipes and Fittings

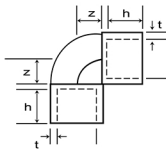
One name, One standard of Excellence.

PIPES**HIGHER IMPACT STRENGTH • THICKER WALLS**

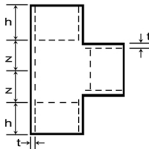
NOMINAL SIZE		O.D. mm	WALL THICKNESS		L LENGTH mm
mm	inch		min.	max.	
20	1/2	20	1.8	2.18	3000
25	3/4	25	1.9	2.29	3000
32	1	32	2.0	2.4	3000
40	1 1/4	40	2.3	2.73	3000
50	1 1/2	50	2.9	3.39	3000
63	2	63	3.6	4.16	3000

**FITTINGS****THICKER WALLS • LONGER LAYING LENGTHS • DEEPER SOCKETS • ULTRA HIGH IMPACT****COUPLING****END CAP****MALE ADAPTER****FEMALE ADAPTER****COUPLING TEE****WATER ELBOW****WATER TEE****THREADED ELBOW****THREADED TEE****SEE THE DIFFERENCE OF EMERALD IN-HOUSE FITTINGS****WATER ELBOW 20 MM**

PARAMETER	EMERALD	BRAND X
Wall Thickness (t)	4.40	3.0
Socket Depth (h)	18.70	16.5
Laying Length (z)	11.70	10.6

**WATER TEE 25 MM**

PARAMETER	EMERALD	BRAND X
Wall Thickness (t)	4.20	4.0
Socket Depth (h)	20.10	19.0
Laying Length (z)	13.60	13.40

**EMERALD VINYL CORPORATION**

Plant: 24 Oliveros Drive, Balintawak, Quezon City
 Tel. nos.: 8361-6101 / 8362-8021 to 24
 Fax no.: 8361-6740



CERTIFICATION INTERNATIONAL
 ISO 9001:2015



Accredited
 GMS Certification Body
 Accreditation No.
 MSA-001