

ultima Supra Series

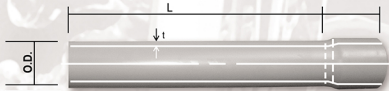
for Drain, Waste and Vent



EMERALD

PVC Pipes and Fittings

One name, One standard of Excellence.



OUR GUARANTEE

EMERALD Series PVC for Drain, Waste and Vent are manufactured through the most modern production technology and strict quality control procedures. Hence, it delivers superior product performance that assures trouble-free lifetime service.

Moreover, EMERALD supports customers by way of technical assistance and information on design, actual demonstration and such other traditional post sale service.

All EMERALD piping materials have the renowned EMERALD guarantee of reliability and superior quality.

PHILIPPINE STANDARD REFERENCE
Bureau of Product Standards PNS 1950 Department of Trade and Industry

INTERNATIONAL STANDARD REFERENCE
ASTM as per Designation D-2729 ISO 4435

PIPES

NOMINAL SIZE		OUTSIDE DIAMETER mm	SERIES 600 WALL THICKNESS (mm)		SERIES 1000 WALL THICKNESS (mm)	
mm	inch		min.	max.	min.	max.
63	2	57.15	1.78	1.98	2.44	2.64
90	3	82.55	2.44	2.64	3.65	3.85
110	4	107.06	2.44	2.64	3.71	3.95
CLASS 34 Wall thickness (mm)						
			min.	max.		
160	6	160	4.70	4.95		
200	8	200	5.90	6.30		
250	10	250	7.30	8.30		
315	12	315	9.20	10.40		
CLASS 41 Wall thickness (mm)						
			min.	max.		
400	16	400	9.80	11.00		

RESISTANCE TO EXTERNAL IMPACT TEST FOR SANITARY PIPES

NOMINAL SIZE mm	O.D. mm	BPS STANDARD			EMERALD STANDARD		
		weight of striker (kg)	height of striker (m)	Impact Energy (N-m)	weight of striker (kg)	height of striker (m)	Impact Energy (N-m)
63	57.15	0.8	1	7.84	6	2	117.6
90	82.55	1	2	19.6	6.5	2	127.4
110	107.06	1.6	2	31.36	6.5	2	127.4
160	160	3.2	2	62.72	7.5	2	147
200	200	4	2	78.4	7.5	2	147
250	250	5	2	98	7.5	2	147
315	315	6.3	2	123.48	7.5	2	147

FITTINGS

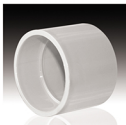
WIDEST RANGE OF INJECTION MOLDED FITTINGS IN THE INDUSTRY



1/8 (45°) BEND



1/4 (90°) BEND



COUPLING



SAN WYE

MAIN FEATURES

- DEEPER SOCKETS
- LONGER LAYING LENGTHS
- THICKER WALLS



SAN TEE



P-TRAP



CROSS WYE



CROSS TEE



C.O. ADAPTER W/ PLUG



**EMERALD VINYL
CORPORATION**

Plant: 24 Oliveros Drive, Balintawak, Quezon City
Tel. nos.: 8361-6101 / 8362-8021 to 24
Fax no.: 8361-6740

